



Flu Watch

MMWR Week 40: September 29, 2024 to October 5, 2024

All data are provisional and subject to change as more reports are received.

Geographic Spread



South Carolina reported **local activity** this week.

Influenza Indicators

Influenza Indicator	Change from Previous Week
Lab-confirmed tests	Decreased
ILI Percent	No Change
Hospitalizations	Decreased

Regional Influenza Activity



Decreased



Decreased



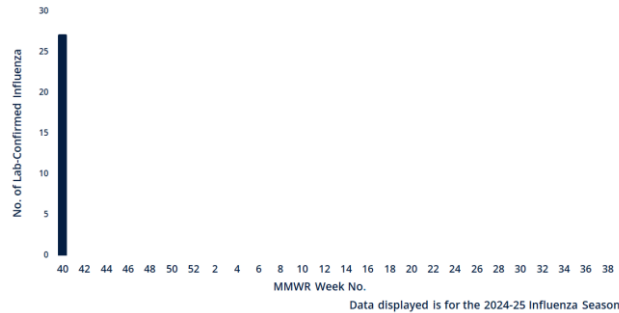
No Change



Decreased

Virologic Surveillance

This week **27** lab-confirmed tests were reported. In the current flu season, there have been **27** lab-confirmed tests reported.

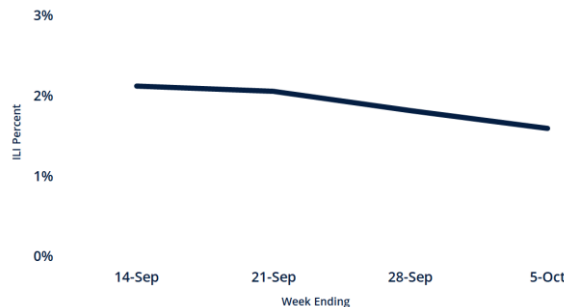


Influenza-Associated Hospitalizations

This week **8** influenza-associated hospitalizations were reported by **49** hospitals. The cumulative hospitalization rate is **0.2 per 100,000**. In the current flu season, there have been **8** influenza-associated hospitalizations.

Influenza-Like Illness Surveillance

The percent of patient visits to sentinel providers for an influenza-like illness (ILI) was **1.6%**, which is **below** South Carolina's baseline (**3.2%**). The ILI activity level overall was **minimal**.



Influenza-Associated Deaths

This week, **0** influenza-associated deaths were reported. The cumulative mortality rate is **0.0 per 100,000**. In the current flu season, there have been **0** influenza-associated deaths.

Virologic Surveillance

Lab-Confirmed Influenza Cases by Influenza Type to Date*					
Influenza Type	No. of Cases (%)				
	This Week	2024-25	2023-24	2022-23	5 season average
Overall	27	27	347	974	333
Influenza A	27(100.0)	27(100.0)	197(56.8)	943(96.8)	287(86.2)
A(H3)	6(22.2)	6(22.2)	--	29(3.1)	8(2.6)
A(H1N1)	1(3.7)	1(3.7)	4(2.0)	5(0.5)	3(0.9)
A(NS)**	20(74.1)	20(74.1)	193(98.0)	909(96.4)	277(96.5)
Influenza B	--	--	148(42.7)	28(2.9)	45(13.5)
B (Victoria)	--	--	--	--	--
B(Yamagata)	--	--	--	--	--
B (LND) ⁺	--	--	148(100.0)	28(100.0)	45(100.0)
Influenza Virus Coinfection[§]	--	--	2(0.6)	3(0.3)	1(0.3)

*Data presented from previous influenza seasons represents the data from that season through the same week as the current season. Nationally, the influenza season begins with MMWR week 40 and ends with MMWR week 39. The 2024-25 influenza season began on September 29, 2024 and will end on September 27, 2025.

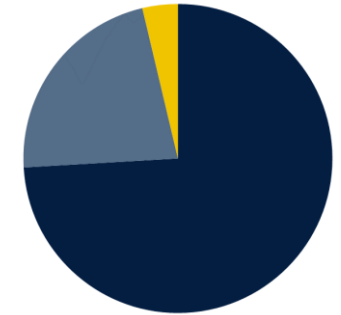
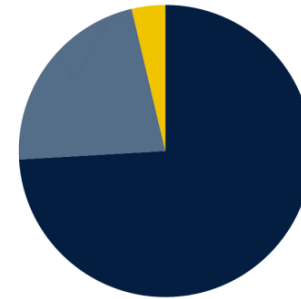
**NS - not subtyped +LND - lineage not determined

[§]Cases with more than one influenza A subtype in the same sample or with influenza A and B viral types in the same sample simultaneously.

Laboratory-Confirmed Influenza Cases, by Virus Type

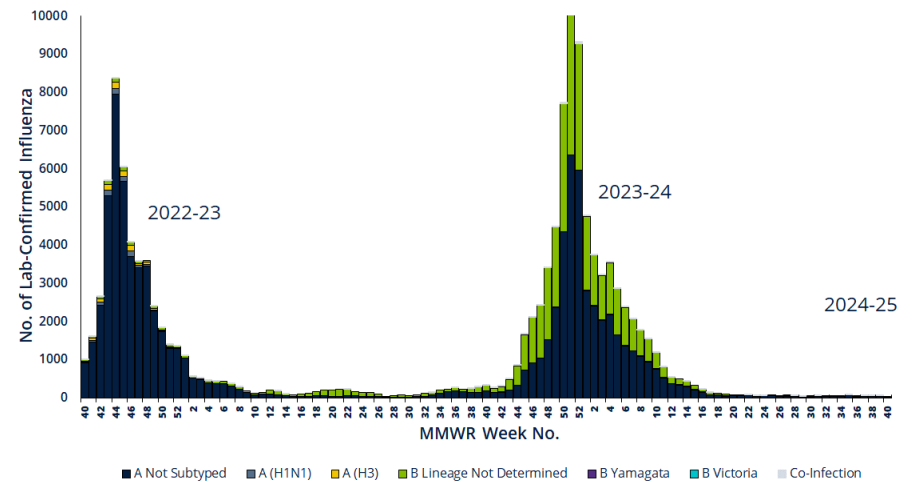
Week ending 10/5

Cumulative



■ A not subtyped ■ A(H1N1) ■ A(H3) ■ B (lineage not determined) ■ B (YAM) ■ B (VIC) ■ Co-infection

Laboratory-Confirmed Influenza Cases, 2022-23 Season to Present



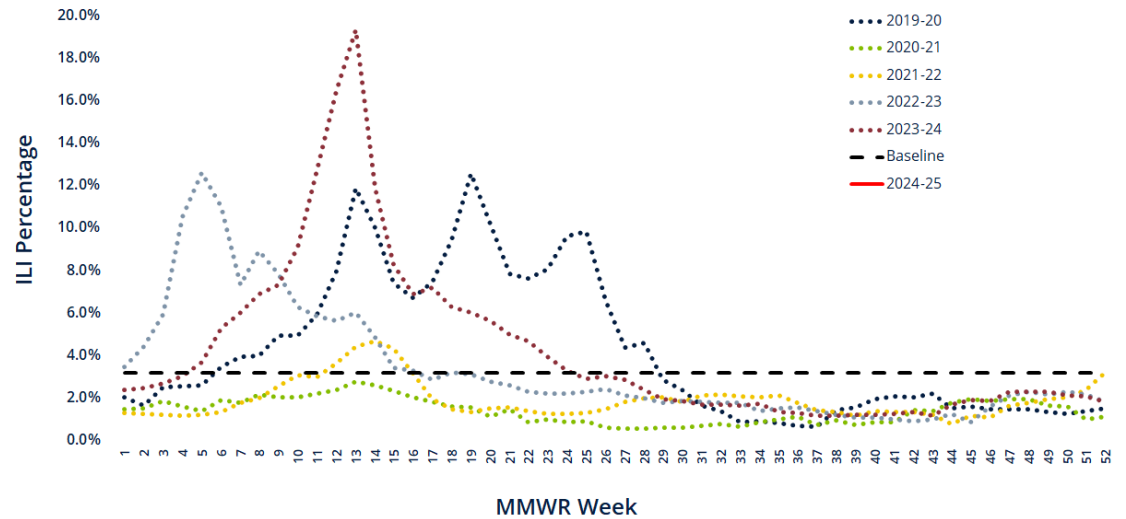
Influenza-Like Illness (ILI) Surveillance

This week, the ILI activity level was **minimal** and **1.6%** of patient visits to SC ILINet providers were attributed to an influenza-like illness. This is **below** the state baseline of **3.2%**.

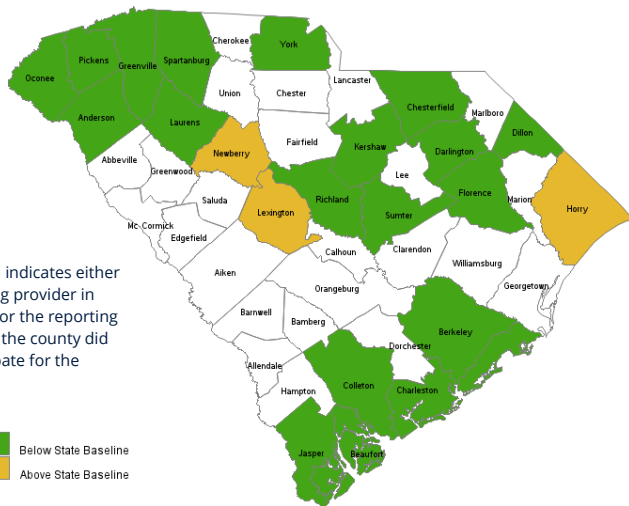
Reports were received from providers in **22** counties, representing all DPH Public Health regions.

ILI percentage is dependent upon the number of reporting providers and/or can vary by disease activity or the number of providers submitting reports.

Percentage of Influenza-like Illness (ILI) Visits Reported by Sentinel Providers for Past and Current Seasons

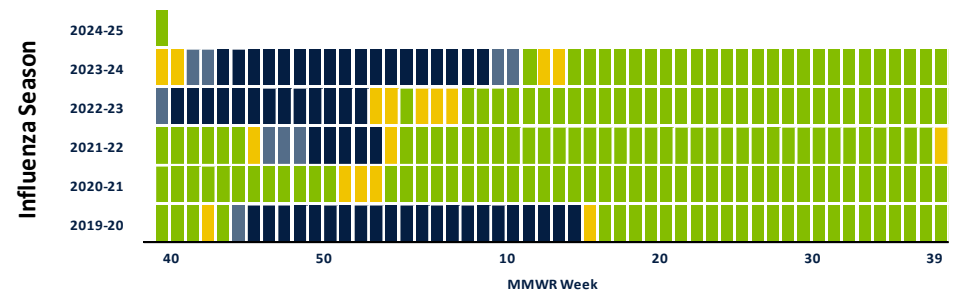


County ILI Percent



No color fill indicates either no reporting provider in the county or the reporting provider in the county did not participate for the week.

State ILI Activity Level by MMWR Week, 2017-18 Influenza Season to Present



ILI ACTIVITY LEVELS: **MINIMAL** **LOW** **MODERATE** **HIGH**

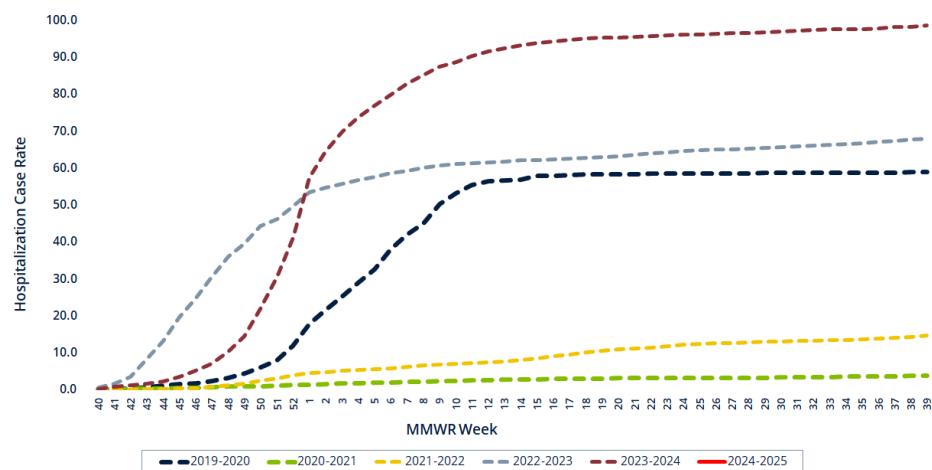
Influenza-Associated Hospitalizations And Deaths

Influenza-Associated Hospitalizations by Age Group*						
Influenza Season	No. of Hospitalizations (Rate)					
	Overall	Ages 0-4	Ages 5-17	Ages 18-49	Ages 50-64	Ages 65+
This Week	8(0.2)	1(0.4)	--	1(0.1)	2(0.2)	4(0.4)
2024-25	8(0.2)	1(0.4)	--	1(0.1)	2(0.2)	4(0.4)
2023-24	15(0.3)	--	1(0.1)	3(0.1)	3(0.3)	8(0.9)
2022-23	33(0.8)	--	2(0.4)	9(0.4)	4(0.5)	18(2.6)
5 season average	12(0.3)	--	1(0.1)	3(0.1)	2(0.2)	7(0.7)

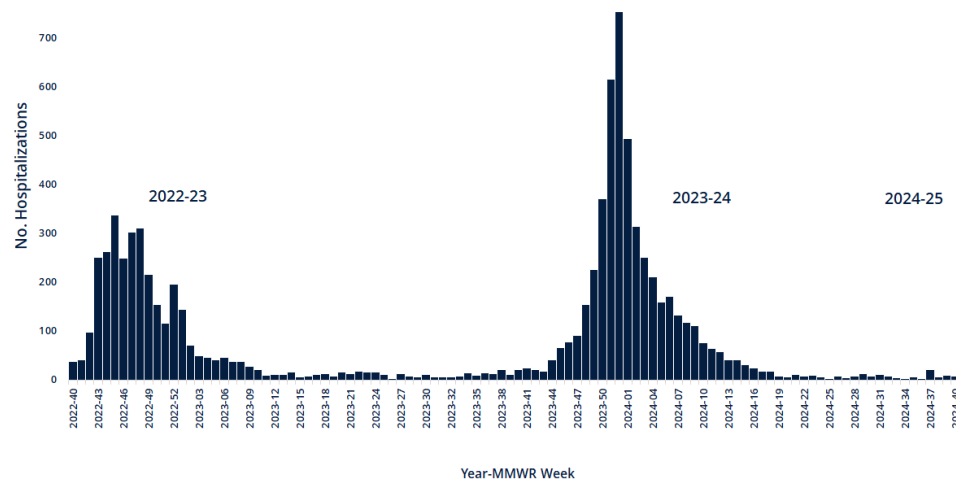
Influenza-Associated Deaths by Age Group*						
Influenza Season	No. of Deaths (Rate)					
	Overall	Ages 0-4	Ages 5-17	Ages 18-49	Ages 50-64	Ages 65+
This Week	--	--	--	--	--	--
2024-25	--	--	--	--	--	--
2023-24	--	--	--	--	--	--
2022-23	2(0.0)	--	--	--	--	2(0.2)
5 season average	1(0.0)	--	--	--	--	1(0.1)

*Data presented from previous influenza seasons represents the data from that season through the same week as the current season. Nationally, the influenza season begins with MMWR week 40 and ends with MMWR week 39. The 2024-25 influenza season began on September 29, 2024 and will end on September 27, 2025.

Cumulative Hospitalization Rate for Past and Current Seasons



Reported Influenza-Associated Hospitalizations, 2022-23 Season to Present



Influenza-Associated Deaths by Region

