

## Geographic Spread



South Carolina reported **sporadic activity** this week.



## Influenza-Associated Hospitalizations and Deaths

This week **1** influenza-associated hospitalization was reported by 25 hospitals. The cumulative hospitalization rate is **90.8** per 100,000. There were **4** laboratory-confirmed influenza-associated deaths reported; however, all deaths occurred in previous weeks. The cumulative mortality rate is **5.7** per 100,000. Compared to the previous week, the number of reported hospitalizations decreased by **5** cases (**83.3%**) and deaths **remained the same**. In the current flu season, there have been **4,505** influenza-associated hospitalizations and **284** influenza-associated deaths reported.



## Virologic Surveillance

A total of **30** influenza cases (**29** positive rapid antigen detection tests; **1** lab-confirmed test) were reported from 10 counties representing all four DHEC Public Health regions. Influenza B was most frequently reported by clinical labs. Compared to the previous week, this is a **decrease** of **15** cases (**33.3%**). In the current flu season, there have been **135,370** influenza cases (**131,803** positive rapid antigen detection tests; **3,567** lab-confirmed tests) reported.



## Influenza-Like Illness Surveillance

The percent of patient visits to sentinel providers for an influenza-like illness (ILI) was **0.30%**, which is **below** South Carolina's baseline (**3.13%**). Compared to the previous week, this is a **decrease** of **0.08%**.

The ILI activity level was **minimal**.

For a description of South Carolina's influenza surveillance components and definitions go to:

<http://www.scdhec.gov/Health/DiseasesandConditions/InfectiousDiseases/Flu/FluData/>

For national surveillance, please visit:

<https://www.cdc.gov/flu/weekly/>

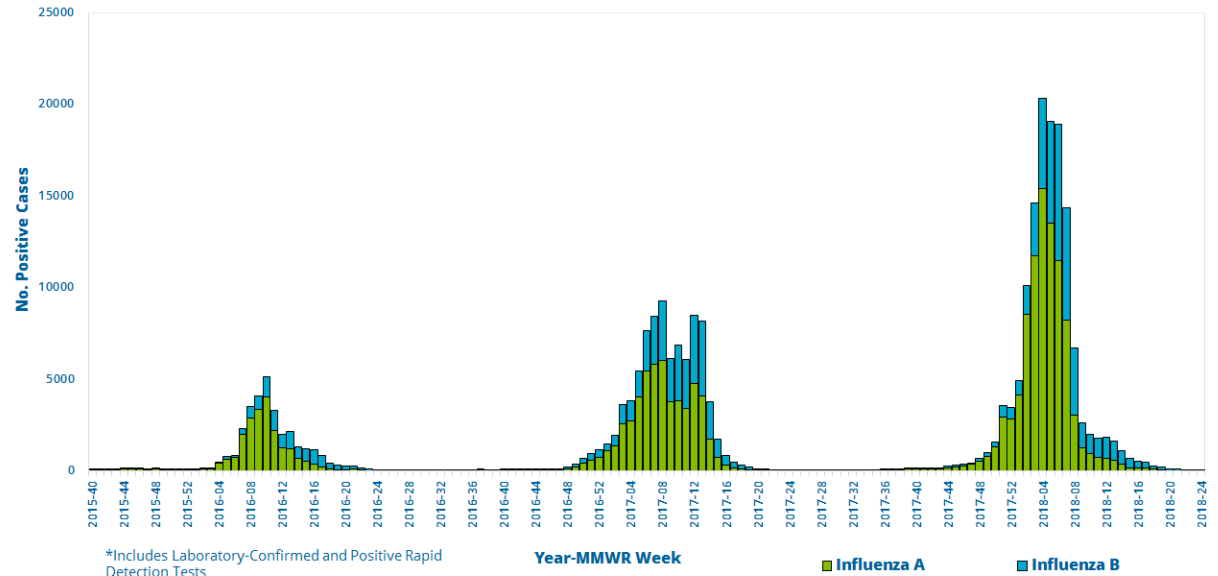


# Virologic Surveillance

This week, **1** lab-confirmed case and **29** positive rapid influenza detection tests were reported by clinical labs.

**Influenza B** was most frequently reported by clinical labs.

**Influenza Cases\* Reported by Clinical and Public Health Labs, 2015-16 Season to Present**



**Influenza Cases Reported by Public Health and Clinical Labs, This Week and Season Total**

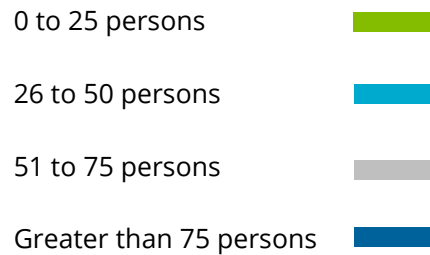
Influenza Type	Public Health Lab		Clinical Labs		Total	
	This Week	Season Total	This Week	Season Total	This Week	Season Total
<b>Overall</b>	<b>0</b>	<b>233</b>	<b>30</b>	<b>135137</b>	<b>30</b>	<b>135370</b>
<b>Influenza A</b>	<b>0</b>	<b>173 (74.2%)</b>	<b>12 (40.0%)</b>	<b>91154 (67.4%)</b>	<b>12 (40.0%)</b>	<b>91327 (67.4%)</b>
A (H3)	--	131 (75.7%)	--	391 (0.4%)	--	522 (0.6%)
A (H1N1)	--	42 (24.3%)	--	169 (0.2%)	--	211 (0.2%)
A (not subtyped)	--	--	12 (100%)	90594 (99.4%)	12 (100%)	90594 (99.2%)
<b>Influenza B</b>	<b>0</b>	<b>60 (25.8%)</b>	<b>18 (60.0%)</b>	<b>43464 (32.2%)</b>	<b>18 (60.0%)</b>	<b>43524 (32.2%)</b>
B (Victoria)	--	2 (3.4%)	--	--	--	2 (0.0%)
B (Yamagata)	--	53 (88.3%)	--	--	--	53 (0.1%)
B (lineage not performed)	--	5 (8.3%)	18 (100%)	43464 (100%)	18 (100%)	43469 (99.9%)
<b>Influenza (not typed)</b>	--	--	--	<b>519 (0.4%)</b>	--	<b>519 (0.4%)</b>



# Virologic Surveillance

Map of Influenza Cases (n)\*  
and Influenza Case Rate/100,000 By County  
For Week Ending 6/16/2018

Weekly Influenza Case Rate per 100K



\*Includes all lab-confirmed and positive rapid cases



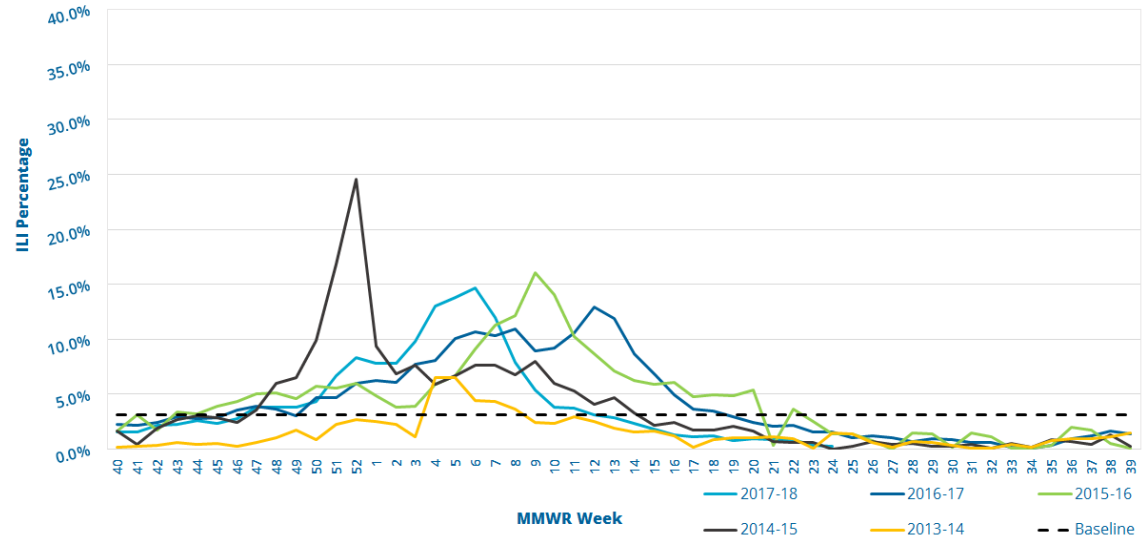
# Influenza-Like Illness Surveillance

This week, the ILI activity level was **minimal** and **0.30%** of patient visits to SC ILINet providers was attributed to an influenza-like illness. This is **below** the state baseline, **3.13%**.

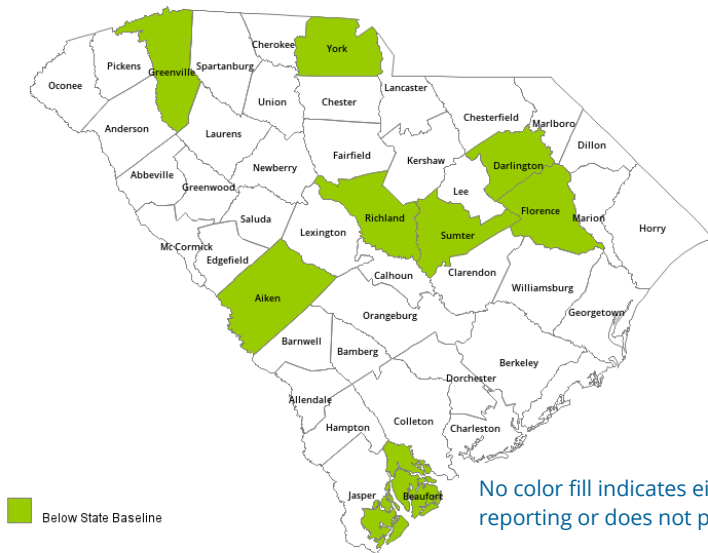
Reports were received from providers in 8 counties, representing all 4 DHEC Public Health regions.

\*\*ILI percentage is dependent upon the number of reporting providers and/or can vary by disease activity or the number of providers submitting reports.\*\*

Percentage of Influenza-Like Illness (ILI) Visits Reported by Sentinel Providers for Past and Current Seasons



County ILI Percent



State ILI Activity Level 2017-18 Calendar by Week of the Year

OCT	NOV	DEC	JAN	FEB	MAR	APR	MAY	JUN	JUL	AUG	SEP
40	44	48	1	5	9	14	18	22	27	31	35
41	45	49	2	6	10	15	19	23	28	32	36
42	46	50	3	7	11	16	20	24	29	33	37
43	47	51	4	8	12	17	21	25	30	34	38
		52			13			26			39

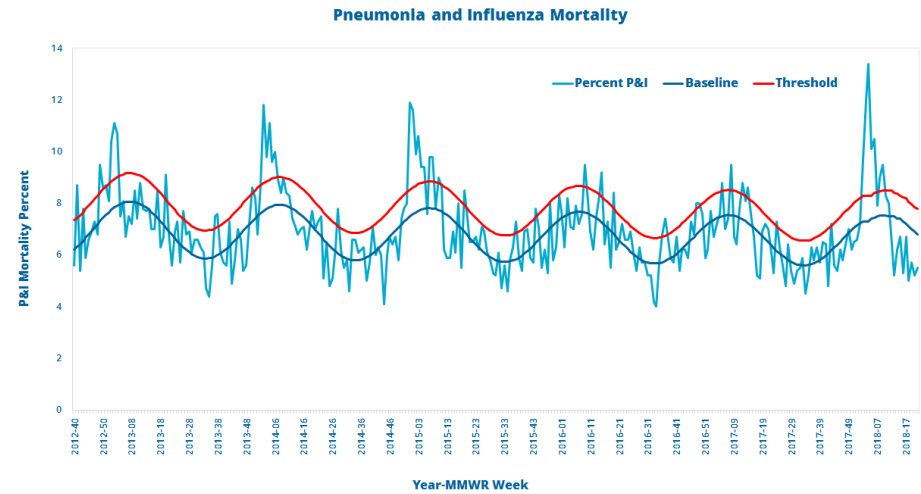
ILI ACTIVITY LEVELS: **MINIMAL** **LOW** **MODERATE** **HIGH**



# Influenza-Associated Hospitalizations And Deaths

Age Group	Hospitalizations			Deaths		
	This Week	Rate per 100,000	Season Total	This Week	Rate per 100,000	Season Total
0 to 4	0	54.2	159	--	1.0	3
5 to 17	0	17.5	141	--	--	--
18 to 49	1	29.2	585	--	1.3	27
50 to 64	0	115.8	1054	--	5.6	51
65 & older	1	406.1	2566	--	32.1	203
Total	1	90.8	4505	--	5.7	284

The percentage of deaths attributed to pneumonia and influenza was 5.5%. This is **below** the epidemic threshold for the week ending May 26, 2018.



Reported Influenza-Associated Hospitalizations by Age Group, 2015-16 Season to Present

